

Rabbit anti-human Vitronectin IgG Product No. ADG1030

Description

An IgG purified from rabbit serum by Protein A affinity chromatography. Rabbits were immunized with multimeric native human vitronectin. This polyclonal antibody reacts with human and murine vitronectin protein.

Presentation

Screw capped vial containing 1 mg of purified antibody in Tris-Glycin-Puffer, 0.5 M NaCl, 1 mg/ml BSA, 0.02% NaN₃, pH 7.5. The IgG concentration is 1 mg/ml. Spin the vial briefly before opening.

Storage and Stability

Store the antibody at 2°-8°C. For long-term storage the antibody should be aliquoted and stored at -20°C or colder. It is recommended to avoid freeze-thaw cycles.

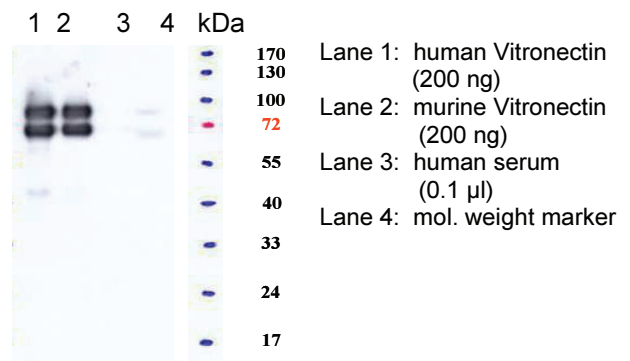
Applications

B. ELISA

The antibody may be used as detector antibody in ELISAs. An antibody concentration of 1µg/mL is recommended.

B. Western Blot

The antibody recognizes vitronectin following SDS-PAGE under reducing conditions. A primary antibody concentration of 1-10 µg/mL is recommended.



Distributed by:

LOXO GMBH

IMMUNOLOGIE • MOLEKULARBIOLOGIE
 BIOCHEMIE • PRODUKTE UND SYSTEME

Gerhart-Hauptmann-Str. 48
 69221 Dossenheim

Tel +49 6221 868023
 Fax +49 6221 8680255

www.loxo.de - info@loxode

Reference

Multimeric vitronectin. Identification and characterization of conformation-dependent self-association of the adhesive protein. Stockmann A, Hess S, Declerck P, Timpl R, Preissner KT. J Biol Chem. 1993 Oct 25;268(30):22874-82

Hinweis/Note:

Der Packungsbeileger dient nur als erste Information. Der relevante Packungsbeileger liegt der Ware bei.
 The datasheet is for information purposes only. The current datasheet will be enclosed with product shipment.